



# RX OWNERS REMOTE MANUAL



PGA is a registered trade mark of the Professional Golfers' Association Limited.

[POWAKADDY.COM](http://POWAKADDY.COM)



Thank you for purchasing the all new PowaKaddy. Please read the following instructions carefully. Battery care is very important, please refer to this section for detailed instructions.

When you receive your new PowaKaddy you will have the following:

1 x Trolley	1 x Front Castor Wheel Assembly
1 x Battery	1 x Front Bungee Strap
1 x Charger	1 x Instruction Pack
2 x Rear Wheels	1 x Handset & Charging Cable

---

## CONTENTS

---

<b>1. PRODUCT WARRANTY</b>	<b>3</b>	<b>6. CONTROLS OVERVIEW</b>	<b>12</b>
<b>2. PRODUCT SAFETY</b>	<b>3</b>	Charging Instructions	
Attach the Wheels		Battery Safety	
Anti-Tip Wheel		<b>7. BATTERY CARE</b>	<b>13</b>
<b>3. GETTING STARTED</b>	<b>4</b>	Charging Safety	
Unfolding the Frame		Lithium Battery Storage	
Lithium Battery		Battery Transportation	
Front Castor Wheel Adjustment		<b>8. MAINTENANCE</b>	<b>14</b>
Handle Height Adjust			
Mag-Lok <sup>®</sup>			
MANUAL OPERATION			
REMOTE OPERATION			
<b>4. MODES OF OPERATION</b>	<b>8</b>		
Remote Handset Controls			
<b>5. REMOTE HANDSET</b>	<b>9</b>		
Motor Calibration			
Pairing Remote Handset			
Charging the Handset			
Motor Controls			
USB-C Charging Port			

If unable to locate required information within this manual, please visit [www.PowaKaddy.com/Support](http://www.PowaKaddy.com/Support) where you will find our trolley product FAQ's. Alternatively contact the PowaKaddy Customer Service team.

---

## PRODUCT WARRANTY

---



**Register now!**  
**Don't miss out!**

Scan to open the registration page  
or visit: [powakaddy.com/my-powakaddy](https://powakaddy.com/my-powakaddy)

Please take a moment to register your new product.

You will be required to enter the serial numbers for the Trolley, Battery and Charger. These are located on the individual items. The serial number on the trolley is located in the rear joint, see image.

*\*Terms and conditions apply. See [powakaddy.com](https://powakaddy.com) for details.*



---

## PRODUCT SAFETY

---

Before heading out on course, it is highly advisable to first use your new PowaKaddy in a wide-open area to familiarise yourself with the remote characteristics of the trolley. Preferably use on grass with your golf bag secured to the trolley. The speed, turning and braking characteristics of the trolley will be affected by the surface the trolley is used on.

Note: the trolley is optimised for a bag weight of up to 14kg. An excessively light or heavy bag will affect trolley performance.

Common sense should be applied when using the trolley in remote mode. The trolley does not react well with impacts to cars, trees, bunkers, and immersions in ponds and ditches. Please follow the guidelines listed below:

1. The trolley is not designed to transport people; do not ride on your RX Trolley.
2. Do not transport any other equipment other than what the product is intended for. A PowaKaddy cart bag is the preferred bag of choice for a secure fit.
3. Use the manual control mode when in confined spaces, especially in car parks near and around the club house and pro shop to ensure you have complete control of the product.\*
4. Do not aim the trolley at other people or golf trolleys.
5. Do not drive the trolley through puddles or standing water.
6. Only operate the golf trolley using the remote if there is an uninterrupted line of sight between you and the product.
7. The Product is not a toy. The product is not to be used by children unless supervised by an adult or sufficient safety guidance listed within this manual and safety instruction sheet, provided in the instruction pack is followed.

Note: although the remote has up to a 100 metre range\*\*, we advise to use the remote only where the trolley and hazards are visible.

**Do not attempt to steer the trolley manually when operated in Remote mode.** The trolley will attempt to run straight and at a continuous speed. Press and rotate the control dial to take over in manual mode.

\*PowaKaddy International Ltd cannot take responsibility for damage or injury caused by improper use.

**\*\*100 metre range dependent on terrain, clear line of sight between handset & trolley, and external electrical interference.**

For further information, please refer to the Product Safety guide provided with the trolley and visit the PowaKaddy website.

# GETTING STARTED

## Attach the Wheels

Remove the front castor wheel assembly, wheels, and frame from the box.

Remove the axle caps and fit the wheels by pressing the release button located on the hub and slide onto the axle until the wheel is touching the black clutch. For ease during transport and storage purposes, the wheels can be inverted.

Note: The wheels can be locked into two positions on the axle; push onto the inner groove to engage the clutches. The outer groove can be used when drive is not required.

Slide the front wheel assembly into the frame and secure using the two hex screws and washers provided in the pack. Tighten using the hex key supplied. Note: please save the hex key for adjusting the handle height and attaching the accessory station bolt (supplied in the manual pack).

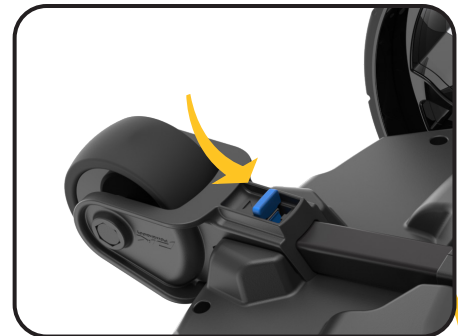


## Anti-Tip Wheel

Always use the Anti-tip Wheel!

When arriving at the course, rotate it from underneath the Powafame until it locks into place, sticking out from the rear of the trolley.

To fold away, depress the small lever and rotate under the Powafame where it will bump into position.



## Unfolding the Frame

To open the frame, press the main lock button (highlighted blue) and lift the handle until the rear and upper joints click into place.

Reverse the process to fold so that the handle hook locks into the rear joint.



## Lithium Battery

**IMPORTANT-** you must fully charge the battery before using the trolley. Always recharge the battery within 24 hours of use. Failure to do so could reduce the life of the battery. See Section 7 Battery Care, for detailed instructions.

Your Powakaddy trolley features an innovative Plug'n'Play™ battery system including sprung terminals and a locking feature to maintain power connection over uneven terrain. Once your battery is charged and trolley assembled, connect your battery as shown.

1. Engage the front of the battery first.
2. Press the rear until the battery clips into position.
3. Press the power button to turn the trolley on.

To remove the battery, first turn off via the power button. Pull the grey latch to disengage the battery before lifting from the frame.

**Note:** The Lithium battery can be stored within the tray for transportation. Please ensure you turn off the battery using the power button. Leaving your battery on with the Green LED illuminated could lead to your battery discharging or trolley activating during transportation.

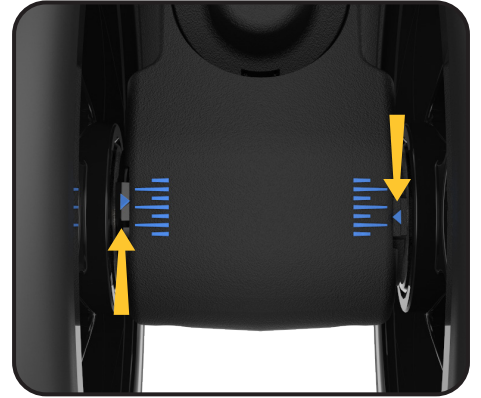
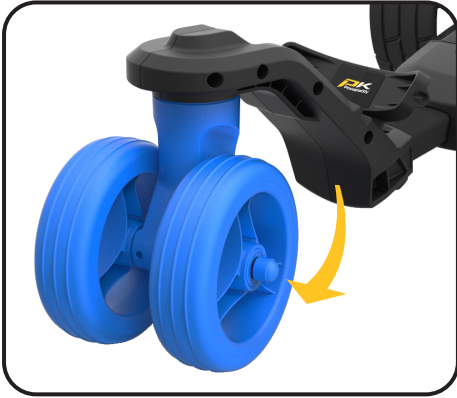




# Front Castor Wheel Adjustment

Your trolley is pre-set to run straight but if your trolley is running off course, adjust by:

1. Rotating the front castor wheels 180deg. to expose the two adjustment screws.
2. Release the front wheel lever.
3. Using the hex key provided, adjust the two screws (see below to determine what direction to turn the screws).
4. On the underside of the castor wheel assembly, you can find indicator markings to help align the wheels. Note: moving a wheel a single notch is usually enough to get the trolley running back in a straight line.



## To make the trolley run more towards the LEFT

- Rotate the LH adjustment screw half a turn to the Counter-clockwise.
- Test the trolley running in manual mode with your bag mounted on the trolley.
- If more adjustment is required, rotate the RH adjustment screw half a turn Clockwise.
- Repeat the steps above until your trolley is running straight.



## To make the trolley run more toward the RIGHT

- Rotate the RH adjustment screw half a turn to the Counter-clockwise.
- Test the trolley running in manual mode with your bag mounted on the trolley.
- If more adjustment is required, rotate the LH adjustment screw half a turn Clockwise.
- Repeat the steps above until your trolley is running straight.



## Handle Height Adjust

The handle height is pre-set to suit most users but can be adjusted to one of five positions. To adjust:

1. With the trolley fully open, remove the locking bolt from the height adjust plate using the 4mm hex key supplied in your manual pack.
2. Raise or lower the handle to the new desired position.
3. Tighten the bolt back up ensuring the adjustment plates on both sides are locked into the mating features.

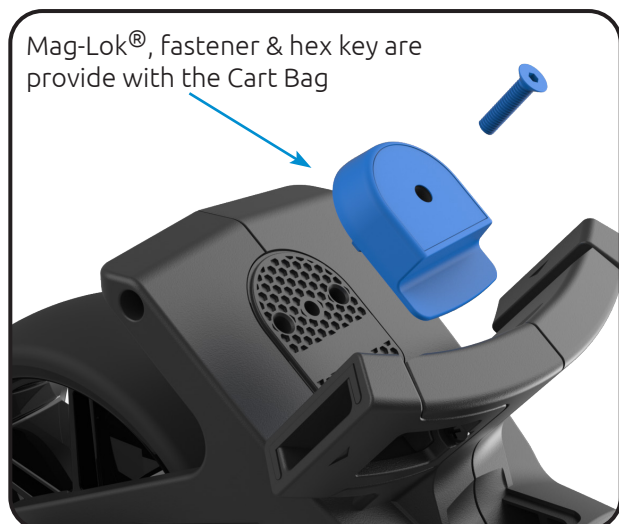


## Mag-Lok®

Your trolley is fully compatible with Powakaddy's innovative, magnetic bag lock system. Quickly and effortlessly attach the bag to the trolley without the need for a lower strap.

The Mag-Lok® is provided with all new compatible Powakaddy Cart Bags. Remove the Mag-Lok® from the tag and then assemble onto the front bag stay using the screw and 3mm hex key provided.

Don't have a compatible Powakaddy Cart Bag?  
The trolley will still work with most cart bags using the Key-Lok™ system - simply attached the front strap (provided in the carton) by clicking it into place on each side of the lower bagstay.



---

# MODES OF OPERATION

---

## Manual Operation

Good for: Tight spaces, car parks, bridges, steep slopes, paths.

- In manual mode the trolley can be fully controlled from the handle, see Manual Controls section for full instruction on handle features.
- Press the centre of the control dial to start the trolley. To increase or decrease the speed rotate the dial.
- The trolleys wheels are free to rotate meaning the trolley can be steered by the user to guide it through tight terrain or in areas where there is risk to people or property.

Note: Due to the front castor wheel, over rough and hill terrain the trolley will naturally steer downhill in manual operation. Please hold onto the trolley handle to remain in full control of the trolley.

Best Practice:

- When operating in tight areas you should physically keep control of the trolley by steering from the handle.
- When travelling up or down steep terrain keep control of the trolley steering the handle.

## Remote Operation

Good for: Fairways, around the greens or when you are in the rough.

**Not for:** Car parks, bridges, paths or negotiating hazards.

- In Remote mode the motors will attempt to drive the trolley in a straight direction. If you try and steer the trolley manually it will counteract your input. Use the remote handset to steer the trolley or use the trolleys control dial to switch to manual mode. The trolley can now be steered manually from the handle.

Best Practice:

- The remote has a nominal 100m range and under certain conditions may travel further. However, it is recommended that you keep the trolley within 25m and a clear line of sight so that you can operate safely and see obstacles in its way.
- Hold the handset in your hand and position the trolley in front of you during operation. Make small adjustments to direction and speed as you see fit. Do not place the handset in your pocket while the trolley is moving.
- Place the handset on the cradle under the handle when taking a shot.
- If you place the handset in your pocket or clip to your belt while taking a shot, use the key lock button to protect from accidental button presses.
- If you are going to walk any distance away from the trolley, keep your handset with you so you can drive the trolley to you instead of walking back to the trolley.

The trolley will switch between control modes based on the last input. For example, if you start the trolley in manual mode then change the direction or speed using the remote the trolley is now in remote mode.



# REMOTE HANDSET

Your new remote handset is pre-paired to the trolley and ready to use. The remote can be stowed under the handle when not in use or for charging the remote from the USB-C socket under the handle. To operate by the remote control power on the trolley first then power on the remote handset by pressing the power button on the keypad.

## Remote Handset Controls

See the remote control features below for operation of the remote handset:

1. **POWER BUTTON:**
  - Press to turn handset on. The LED will flash green.
  - Press to lock handset keypad. The LED will flash red. When locked direction button presses will not respond and LED will flash red.
  - Press and Hold to unlock.
2. **FORWARD ARROW:**
  - Press to move the trolley forward.
  - Press to increase speed.
  - Press and hold for increased acceleration.
3. **REVERSE ARROW:**
  - Press to decrease speed when trolley moving in a forward direction.
  - Press and Hold to increase the reduction in speed
  - Press and Hold to reverse the trolley.  
Note: There is no steering function when reversing the trolley. The trolley will stop when the button is released.
4. **LEFT AND RIGHT ARROWS:**
  - Press and Release quickly when the trolley is moving forwards to make small course corrections.
  - Press for a longer duration when moving forwards to make a larger course correction.
  - Press and Hold when stationary will turn the trolley on the spot.  
Note: a continuous Press and Hold when the trolley is moving forwards will cause the trolley to make a U-Turn. Once the button has been released, the trolley will continue on its new heading and accelerate back to the previous speed.
5. **STOP BUTTON:**
  - Press the button to bring the trolley to a glide stop.
  - Press and hold to bring to an abrupt emergency stop.



Please note, the remote handset features a sleep function whereby the handset will switch off after 30 minutes of inactivity. To wake up, ensure the trolley is powered on. Press the remote handset power button, the LED will flash green until reconnected to the trolley.

# Motor Calibration

The motors of the trolley have been factory calibrated. When operated in remote mode the motor control system automatically adjusts the each wheel speed to maintain the trolley running in a straight line on course. When operated in manual mode this system is disabled for ease of manoeuvrability. If you experience problems with the trolley pulling to the left or right during operation on flat level ground use the following check list before using the calibration steps below:

1. Check the front wheel is rotating freely and not clogged by dirt or debris in between the wheel and wheel housing.
2. Check the front wheel is set to the correct alignment see instructions on adjusting the front wheel.
3. Check the rear wheels are free to move and are correctly engaged with the clutch.
4. Is the golf bag unevenly loaded? Adding more weight to one side could affect the motion of the trolley.

If you have checked these items and are still noticing the trolley pulling off to one side it could be caused by slight difference in the drive performance between left and right. To calibrate the drive speed:

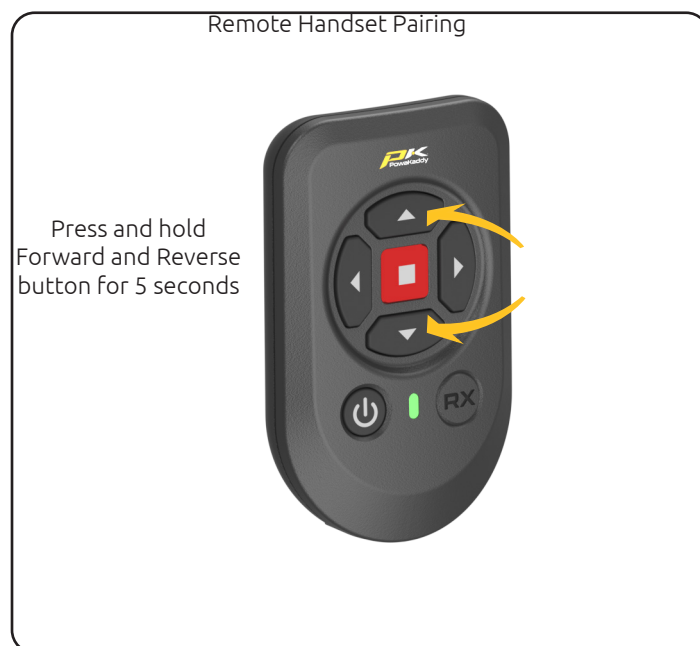
1. Find a large flat area of ground up to 20 metres.
2. Power on the trolley and check the wheels are engaged.
3. Power on the remote handset and check the remote is paired with the trolley.
4. Press and hold the left and right buttons for 5 seconds to start calibration mode. The LED on the remote will flash red and blue to indicate calibration mode active.
5. The trolley motors will start and run the calibration process. The trolley will stop after approx 10m.

## Pairing Remote Handset

Your remote handset is already paired to the trolley. If you have to replace a lost or damaged remote handset you will need to pair the Bluetooth remote handset to the trolley.

To pair a new remote handset:

1. Power on the trolley first, pairing mode is enabled for the first 30 seconds after powering on the Bluetooth device will be set to discovery mode.
2. Power on the remote handset by pressing the power button.
3. The remote LED will flash green on and off to indicate it is powered on. Press and hold the up and reverse buttons at the same time for over 5 seconds to start pairing mode.
4. The LED on the remote handset will stay on during the button press and then start to flash to indicate the remote handset is set to pairing mode.
5. Once paired with the trolley the LED will stay on for 2 seconds and then turn off. Your trolley is now paired and ready to use.
6. If the LED finishes flashing green on and off and then turns red this indicates the remote has not paired successfully and you will need to repeat the steps above.



Power the trolley off and back on to restart the pairing process.

## Charging the Handset

Your remote handset can be used for up to 4 rounds of golf on a single charge depending on use and duration. For optimum performance and prolonging the life of the battery, we recommend charging after every use.

If the handset battery starts to run low, a low battery warning LED will flash red on the remote handset. At this point we suggest charging the handset battery using the USB charging port on the handle. The trolley can continue to be used in manual mode.

Using the USB-C cable provided with the trolley connect the remote charging socket in the base of the remote to the trolley USB-C charging socket. You can place the remote securely in the remote dock under handle while charging.



To charge the handset:

1. Plug the supplied USB-C cable into a powered USB port on laptop, phone charger or trolley. Always check the manufacturers information before use. (5v/2A max)
  2. Plug in the handset to begin charging.
  3. The LED on the remote will illuminate red to indicate charging.
  4. The charging time will range up to 5 hours depending on the level of discharge.
  5. Once the charging process is complete, the LED will turn to green and charging function will stop.
  6. Unplug the handset once fully charged.
- Please charge the remote using the charging cable supplied. Other cables may cause damage.
  - Avoid leaving the handset plugged in, on charge beyond 5 hours.



# CONTROLS OVERVIEW

## Motor Controls

To operate the manual controls first power on the motor controller and check the remote is paired with the trolley.

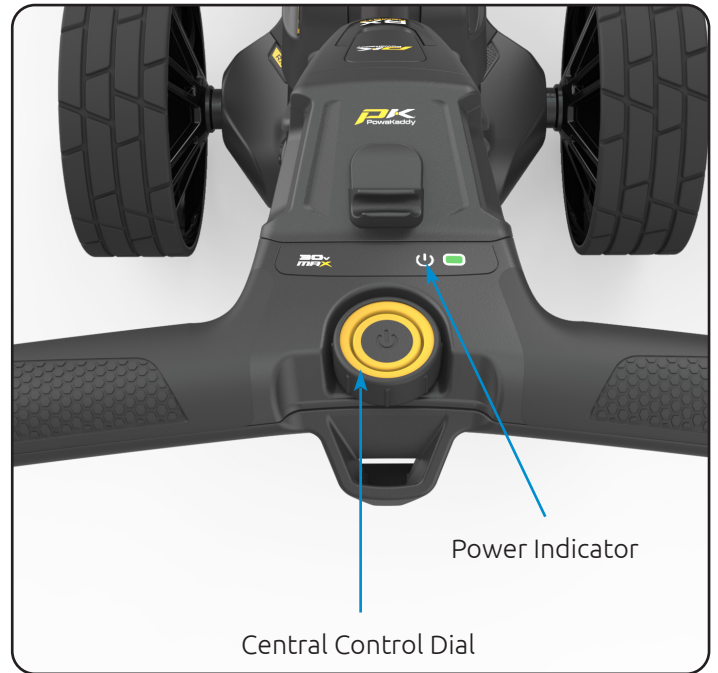
The handle LED is the motor power indicator. This will show red when the motor is off and green when the motor is powered on. You can switch seamlessly between remote control and manual control of the trolley while operating the trolley on course.

Stop and Start the trolley:

- Press the button in the centre of the control dial to start and stop the motor. The power indicator LED will change from red (OFF) to green (ON) when the motor is powered. Rotate the dial clockwise to increase the motor speed.

Increase and Decrease Speed:

- Rotate the control dial to adjust the speed of the trolley.
- Rotate clockwise to increase the speed and counter clockwise to decrease the speed.



## USB-C Charging Port

Located on the underside of the handle. Open the hatch to charge the remote or mobile devices. The output is rated up to 5V/1.5A, suitable for most USB devices\*

\*USB output voltage 5V/1.5A compatible with most USB portable devices, please check device manufacturers instructions before use. PowaKaddy International Ltd accepts no liability for loss of data or damage from using the charging port with incompatible devices.



---

# BATTERY CARE

---

Note: the XL PLUS 30V Lithium Battery is designed for use over 18 holes and must always be fully charged before the next round. Please follow charging instructions as outlined on the following pages. We are aware that some golfers will try to stretch these batteries to 27 holes. This may damage the overall capacity of the battery and may result in an early failure. Playing more than 18 holes with the battery can seriously shorten the battery's life and will invalidate the battery's warranty.

Note: Conditions such as long or exceptionally hilly courses, cold ambient temperatures, wet ground conditions and excessively heavy golf bags will reduce the range of the trolley.

## Charging Instructions

1. Plug the charger into the mains socket - the charger indicator light will be green.
2. Turn on the battery by pressing and holding the power button until the green light is illuminated.
3. Plug the battery into the charger. The charger light will turn from green to red to indicate the charging process has started.
4. Once the battery is fully charged, the charger status light will be continuous green. At this point, remove the battery from the charger and the charger from the outlet.
5. Turn off the battery using power button.
6. The charging process will take approximately 8 hours depending on the extent of the discharge and battery capacity.
7. Avoid leaving your battery on charge for longer than 12 hours. If left for a long period of time, the battery will automatically turn off.

Please note: if the red and green lights are flashing on the charger, this will indicate that:

- a. The battery was not turned on when connected to the charger.
- b. The charge cycle has finished, and the battery has turned off.
- c. There may be a fault with the battery or charger, please contact PowaKaddy technical support.

## Battery Safety

- Never short circuit a battery. Keep it away from paper clips, coins, keys and other small metal objects that can make a connection between the terminals.
- Do not splash or immerse in liquids.
- Do not store or charge the battery in locations where the temperatures may exceed below -10° (14° F) or above 40° C (105° F) such as outdoor sheds or metal buildings in summer.
- Only charge your PowaKaddy battery using the approved charger supplied. Using another charger may damage the battery or cause fire.
- Never use the battery if the casing or terminals are damaged.
- There are no serviceable parts within the battery, DO NOT ATTEMPT TO OPEN THE BATTERY or attempt a repair. RISK OF ELECTRIC SHOCK OR FIRE.
- The battery is a sealed unit. In the unlikely event liquid leaks from the battery, do not touch the liquid as it may cause irritation or burns.

Follow these precautions:

- Skin contact – Wash with soap and water.
  - Inhalation – Expose to fresh air and seek medical advice.
  - Eye contact – Immediately wash with water for at least 15 minutes. Seek medical attention.
  - Disposal – wear gloves to handle the battery and dispose of immediately; contact your local council or recycling centre.
- 
- Do not incinerate the battery even if damaged.
  - Only use a PowaKaddy Battery with a compatible PowaKaddy Trolley. Use of the battery pack on other products may create risk of injury or fire.



## Charging Safety

- Do not probe terminals with conductive objects.
- Only charge a Powakaddy battery using the supplied Powakaddy charger. The charger and battery pack are specifically designed to work together.
- Only charge on a hard, flat surface.
- The charger will get warm. Do not cover the charger or the battery.
- Do not expose the charger to rain, frost, or snow.
- Do not use a charger if the plug, leads, contacts or casing is damaged.
- Remove the plug with care. Do not pull on the cord.
- Avoid using an extension cable.

## Lithium Battery Storage

Batteries are to be stored in a cool and dry place away from direct sunlight and excessive heat or cold; ideally store at room temperature. Charge your battery fully before storing. Charge once every three months thereafter.

## Battery Transportation

Ensure the battery is turned off when transporting the trolley to avoid activating the trolley and discharging the battery. Check with your airline before attempting to ship your battery by air.

## Lithium Battery Disposal

At the end of its useful life, please discard the battery with due care for the environment.

1. If possible, run down the battery completely and remove from the trolley.
2. Take the battery to your local recycling centre.

---

## MAINTENANCE

---

Your Powakaddy trolley is easy to maintain.

1. Store your trolley inside.
2. Never jet wash or immerse in water. Clean the trolley using a sponge and warm water to remove mud, grass, and other debris.
3. Occasionally remove the wheels and apply grease to the axles and wheels.
4. Only use approved Powakaddy parts for repairs.

Your serial number can be found in the cavity of the rear joint, please make a note for future reference.

Should you experience a problem with your Powakaddy product, please visit [www.powakaddy.com/support](http://www.powakaddy.com/support)



The POWAKADDY name and PK logo are registered trade marks of Powakaddy International Limited and are protected in the UK and other countries and regions. In addition, Powakaddy International Limited owns various design registrations, patents and other IP rights in connection with their products.

Only Powakaddy International Ltd and its authorised stockists and licensees may use the Powakaddy logo, product logos and images in advertising, promotional and sales materials, subject to terms and conditions.

Powakaddy International Ltd is registered in UK. Company No. 07747629, UK Trade Mark Registration No. 3593096



**Register now!**  
**Don't miss out!**

Scan to open the registration page  
or visit: [powakaddy.com/my-powakaddy](https://powakaddy.com/my-powakaddy)



PGA is a registered trade mark of the Professional Golfers' Association Limited.