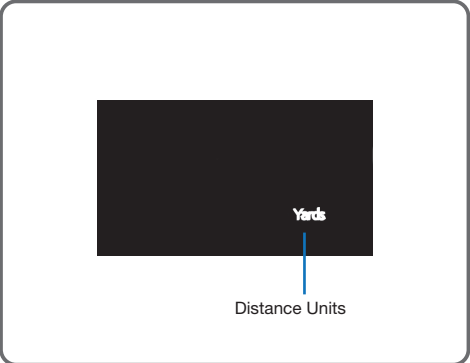


• Security - Pin

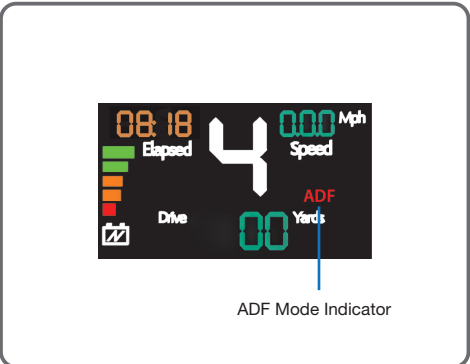
Rotate the control knob and save each digit by pressing the control knob.

Note: if you have added a PIN lock this will be required every time you turn the trolley on. If you have forgotten your PIN you can use the default factory PIN: **7921** to unlock the controls.



• Distance Measurement Preference

- This will change measurement and ADF functions (km/metres or miles/yards).



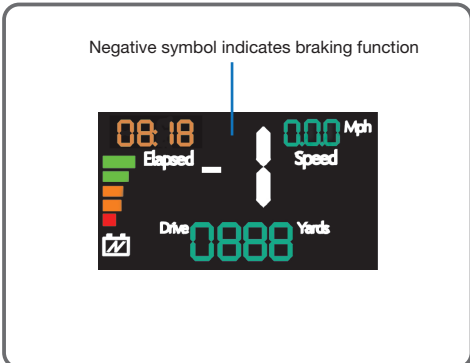
Automatic Distance Function (ADF):

The ADF function is a convenient way of sending your trolley a set distance. For example when you are approaching a green you can send the trolley towards the next tee if the route allows. Please note it is not recommended to send your trolley unattended over steep or rough terrain. To activate:

- 1: Press and hold the central control knob until 'ADF' appears on the display
- 2: Rotate the control knob to select the distance required between 5-50 Yrds/Metres.
- 3: To start the function press the control knob.
- 4: To cancel rotate the control knob to "00" and select.

WARNING! Before using the ADF function please ensure the route is clear from any obstacles. In an emergency the trolley can be stopped by pressing the control knob.

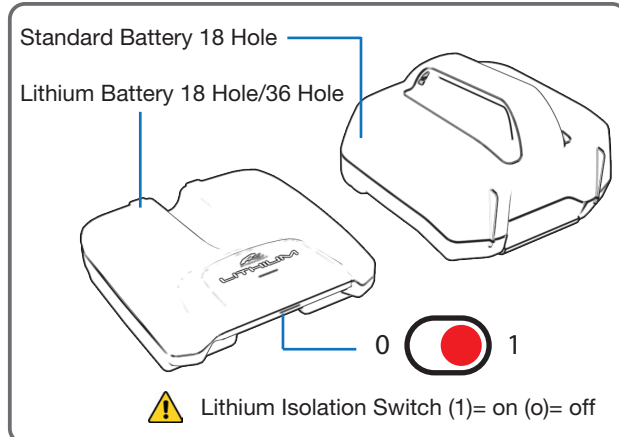
5 FW7EBS ELECTRONIC BRAKING SYSTEM



If you have purchased an Electronic Braking System (EBS) model trolley you have the added advantage of an electronic braking system for hill descent control. The brake function is activated by rolling the central control knob counter-clockwise until you go below zero to a negative number. The power setting will display between -1 & -3 indicating the level of braking force being applied.

WARNING! EBS is an assisted braking system not a 100% parking brake.

6 Battery Care



PLUG'N'PLAY™

Your FW trolley features a new Plug'n'Play™ battery system. To maximise your battery life please take time to read the following battery care and charging instructions.

Batteries available are as follows:

Standard 18Hole | Extended 36Hole* | Lithium 18Hole | Lithium Extended 36Hole*

*In normal conditions the Extended batteries will do 36 holes when used on a Powakaddy trolley. Conditions such as long or exceptionally hilly courses, wet ground conditions and excessively heavy golf bags may reduce the range of the battery. Most lead acid batteries reach the end of their life in the second or third season and often without any apparent reason. Very hot or cold weather does not help. Even batteries that are treated identically have different life spans. Please note the Extended lead acid battery is not available on the Plug'n'Play™ system although an adaptor plate is provided.

⚠ Important Safety Information about Batteries & Chargers

- Never submerge the Lithium battery in water. To clean use a lightly dampened cloth. IMPORTANT - if submerged under water or if water may have entered due to damage to casing, DO NOT USE the battery. Place outdoors in a non-combustible container covered in sand well away from other flammable material, and contact Powakaddy or your Local Authority for further advice.
- Avoid charging your Lithium battery in temperatures below 0 °C or expose the battery to temperatures below -5 °C or above 40 °C.
- Always place the charger on a hard flat heat resistant surface. Do not wrap or cover as the charger generates heat in use.
- Never use the charger or battery if the leads, contacts or casings are damaged.
- Never expose the charger to rain, moisture or damp, if you suspect any of these have occurred then do not use the charger.
- Only charge your battery using the compatible Powakaddy charger provided with your battery. A mismatch of battery and charger could cause damage.
- Never discharge your battery other than in normal use on the trolley.
- Always check with your airline before attempting to transport batteries by air.

- New Lead-Acid batteries can sometimes take 2-3 rounds of golf before they become fully 'activated'. We have found that on rare occasions there is not enough capacity to complete a full round of golf. Our advice is to play only 9 holes on the their first outing.
- Never leave your lead acid battery connected to the trolley for prolonged periods when not in use, this will discharge the battery and the charger will not be capable of re-charging.
- Only charge your Plug'n'Play Lithium battery with the isolation switch in the ON (1) position.
- Ensure your Lithium battery isolation switch is in the OFF (0) position when the battery is connected but not in use. for example during transportation.
- The charger has two lights, when connecting a discharged battery the red light will illuminate, the green light will illuminate during the charging cycle, this does not mean the charge has finished, the battery must remain on charge for a minimum of 12 Hours. Never leave the charger connected to the battery with the mains supply switched off.
- Always recharge your battery (12 Hours Minimum) within 24 hours of use, no matter how many holes played. Never leave your battery in a discharged condition for prolonged periods, this will reduce the life of the battery and your charger may be unable to recharge it.
- Leave the battery on charge even when not in regular use to maintain optimum life and performance. It is perfectly safe to leave the battery plugged in on charge. Once the green light illuminates the charger will use virtually no electricity but guarantee you a fully charged battery for your next round.
- If the battery is to be not used for a period of 3 months or more then it is ok to remove from charge. Always fully recharge the battery (minimum 24 hours). Our advice is to store in a cool dry place. Thereafter recharge the battery once a month.
- Please refer to the product labels on your battery and charger for more information. At the end of the battery's life dispose at your local recycling centre.



Should you experience a problem with your Powakaddy product please go to www.powakaddy.com/support



Maintenance

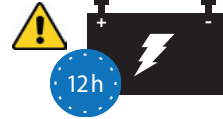
- Your Powakaddy trolley is simple to maintain.
- Never jet wash your trolley or immerse into water. Occasionally remove the wheels and apply grease to the axle and moving parts.
- Your serial number can be found on the underside of the central tube under the upper bag stay. Keep a note of the serial number for reference in the box provided above.

S/N: A F W

Thank you for purchasing the new Powakaddy. We hope you enjoy your new trolley and welcome your feedback and comments. Please read these instructions carefully. Battery care is very important, please refer to the back page of this manual for battery care instructions.

When you receive your new Powakaddy you will have the following:

1 x Trolley | 1 x Battery (Lead-Acid or Lithium) | 1 x Charger | 2 x Wheels | 1 x Instruction pack



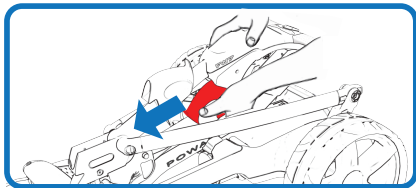
IMPORTANT- you must fully charge your battery for a minimum of 12 hrs before using your trolley. Always recharge your battery within 24 hrs of use. Failure to do so could reduce the life of your battery.

Note: if you have purchased a Lithium or Lithium Extended product the battery is stored in the frame. Remove the battery and activate using the isolation switch located on the underside of the battery. (See image 2 for battery removal)

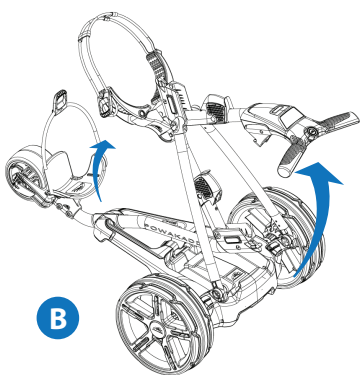


1 Getting Started

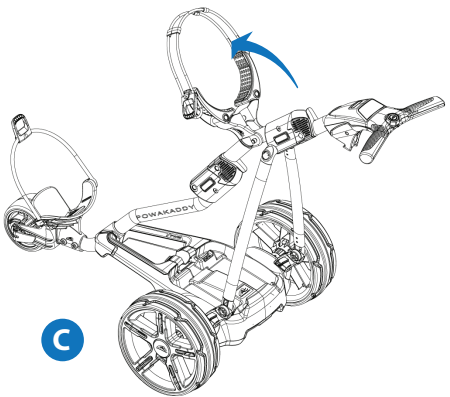
Fit the wheels by pressing the yellow release clip and pushing onto the axle until the clutch is engaged. Note: the wheels can be locked into two positions; push onto the inner groove to engage drive. The outer groove can be used when drive is not required. To open the frame, slide the main lock (highlighted below) forward to release the handle latch and open as shown below. _



A



B



C

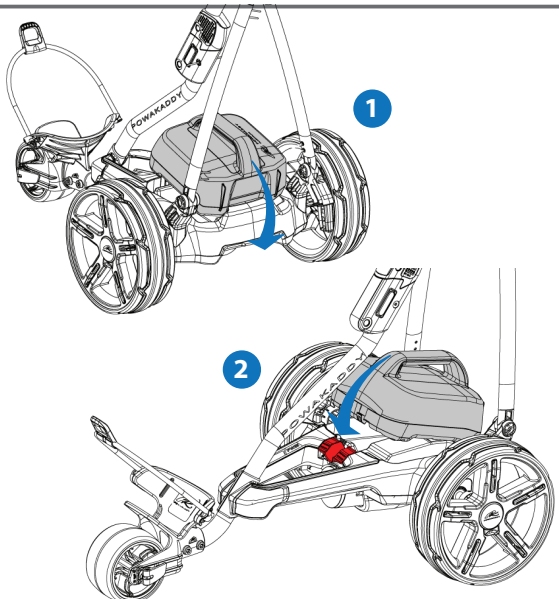
2 PLUG'n'PLAY™

Your FW trolley features a new Plug'n'Play™ battery system. Once your battery is charged and trolley assembled connect your battery as shown.

- 1 Engage the rear of the battery first.
- 2 Press the front until the battery clips into position. The trolleys power will automatically be connected.

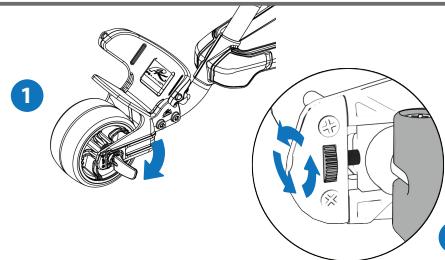
To remove the battery depress the front latch (highlighted) and lift the battery out. The Lithium battery operates in the same way.

Note: The Lithium battery can be stored within the tray for transportation and storage. Please ensure you de-activate the battery using the red isolation switch located on the underside. Leaving your battery in the ON (1) position could lead to your battery discharging or trolley activating during transportation.



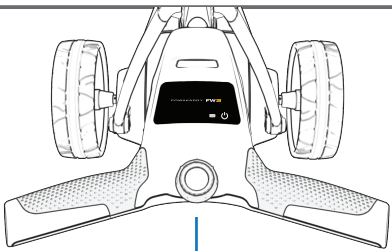
3 Front Wheel Adjustment

Your trolley will already be pre-set to run straight. If you find your trolley tracking to the left or right you can re-adjust this by releasing the front wheel lever and rotating the adjustment roller. Rotate up to make your trolley track more to the LEFT and rotate down to track more to the RIGHT. Once you are happy the trolley is running straight re-apply the lever to lock in position.



4 Controls Overview

FW3



Central Control Knob

Central control: knob Turn to control the speed of the trolley in normal operation. Press to pause and resume your selected speed.

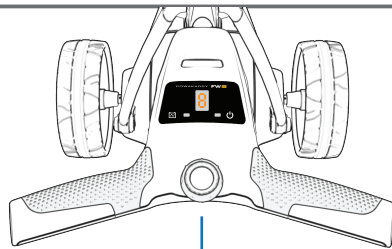
Power Indicator: Displays whether power is being applied to the drive system. (on/off) The light will illuminate red on start up to indicate the motor power condition as off. Press the on / off control in the centre to power the motor on and the green light will illuminate. Rotate the control dial clockwise to increase and counter-clockwise to decrease the speed.



Power Indicator



FW5



Central Control Knob

Central control: knob Turn to control the speed of the trolley in normal operation. Press to pause and resume your selected speed.

USB Charging: Port Located under the screen. Open the hatch to charge GPS & mobile devices. The output is rated to 5v/500mA suitable for most USB devices.

Power Indicator: Displays whether power is being applied to the drive system. (on/off)



Battery Guage: Displays your battery's life



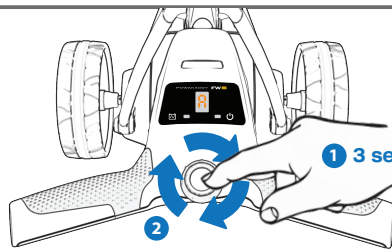
Automatic Distance Function (ADF):

The ADF function is a convenient way of sending your trolley a set distance. For example when you are approaching a green you can send the trolley towards the next tee if the route allows. Please note it is not recommended to send your trolley unattended over steep or rough terrain. To activate press and hold the Central Control Knob until 'A' appears on screen. Rotate the control knob to select from:

1 = 15Yrds 2 = 30Yrds 3 = 45Yrds.

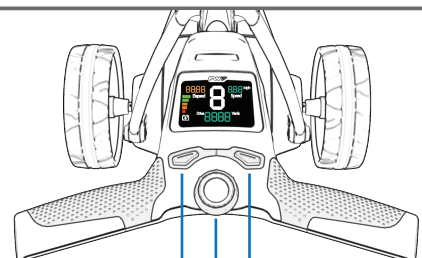
To start the function press the control knob.

WARNING! Before using the ADF function please ensure the route is clear from any obstacles. In an emergency the trolley can be stopped by pressing the control knob.



1 = 15Yrds 2 = 30Yrds 3 = 45Yrds.
3 Press to start

FW7



Left Function Button Right Function Button
Central Control Knob

Once your battery is connected your trolley will be ready to use. The FW7 and FW7 EBS include a colour multifunctional display. The LCD will illuminate showing the 'Default Display' in pause mode.

In normal operation the controls are as follows:

Central control: knob Turn to control the speed of the trolley in normal operation. Press to pause and resume your selected speed.

Left function button: Press to scroll between distance measuring.

• Drive – Reset before leaving the tee to measure your drive. To reset press and hold the left function button (note this will also reset your approach).

• Approach – measure your "approach" distance. Reset your "approach" measurement (select "approach" press and hold the left function button to reset) as you go past the nearest Fairway Distance Marker. Walk to your ball and subtract the distance measured from the marker distance. This will be the required distance to the green.

• Total Distance – This will show the total distance covered by the trolley. This cannot be reset.

Right function button: Press to scroll between Time and Elapsed time.

• Time – This displays the current time. To change this see below.

• Elapsed time – This displays the "on" time of the trolley. This will reset when the battery is disconnected.

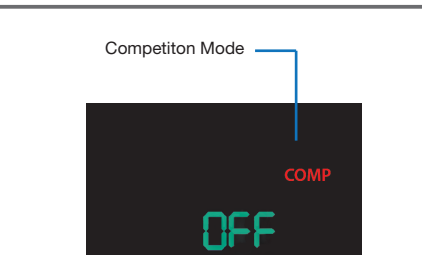
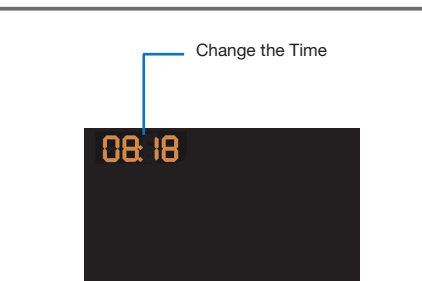
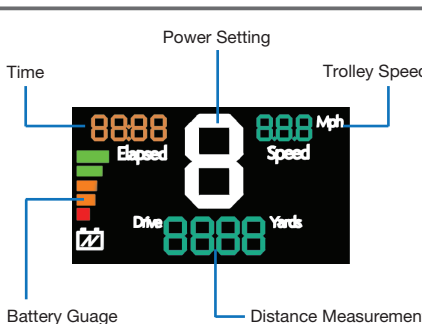
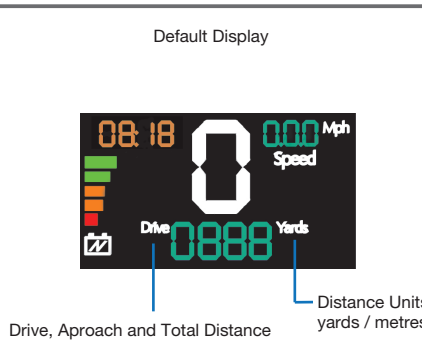
USB Charging: Port Located under the screen. Open the hatch to charge GPS & mobile devices. The output is rated to 5v/500mA suitable for most USB devices.

Factory Settings:

Your new trolley is ready to use but there are a number of preferences you can change in the programming mode:

- 1: Press and hold both function buttons for 3 seconds to enter programing mode.
- 2: Press the right function button to scroll through the options. Select or modify the option by pressing the central control knob.
- 3: Press and hold both function buttons to save and exit after changing any settings. The display will show the default display.

• Time – With the clock flashing rotate the control knob to the required digit and press to save each digit



• Comp mode – With 'COMP' highlighted on the display press the control knob to turn the 'competition' mode on and off.